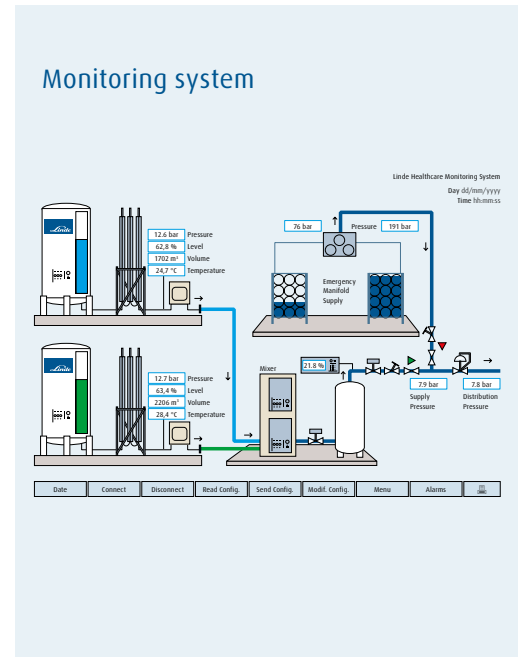




## QI Infrastructure. Full transparency of the Medical Gas Pipeline System (MGPS).



### Securing your hospital

Given today's challenging healthcare environment and the high demands placed on safety and performance, it is more important than ever to have complete control of your medical gas infrastructure as well as compliant documentation, such as as-built updated gas piping drawings.

QI Infrastructure is designed to help secure your facility with accessible, up-to-date medical gas infrastructure information, such as CAD drawings of your Medical Gas Pipeline System showing all the included component interconnectivity.

QI Infrastructure ensures your infrastructure plans comply with National Standards and engineering implementation practices. Possessing up-to-date medical gas installation drawings is critical for trouble-shooting, simulation exercises on different risk scenarios, training, and renovation planning. In the event of an emergency, this service enables swift and thorough analysis of your infrastructure system as you will have up-dated as-built drawings at hand.

Linde Healthcare can facilitate a complete review and labelling of the whole MGPS installation and fixed gas delivery system, including the point-of-use. The service investigates whether existing drawings are complete and updated as-built, and ensures components are labelled with gas information (as well as valve or other component id-number) that can be used for updating asset lists and facilitating regular and routine maintenance.

The service from Linde Healthcare can include continuous updating of all as-built drawings and transfer into CAD for increased transparency and revision control. Our service engineers can label all the components of your medical gas installation, and offer advice and training on how to keep the whole MGPS correctly documented and up to date. In the end, you'll have one source of current drawings and documentation, and full transparency of the medical gas system within your hospital.

## Representational drawings

Drawings representing MGPS are the primary tool in the management of medical gas systems. Accuracy in the drawings, and the assurance that they truly represent installed systems, is a prerequisite for patient and hospital safety.

Generally, drawing details should include:

- Main distribution pipe work with branches to, and internally within, wards and departments.
- Direction of flow and pipe work sizing, together with location of pipe work size changes.
- Controls and warning equipment – valves, pressure reducing sets and alarm systems (excludes wiring runs).
- Terminal unit details.
- Valve charts, detailing valve number, key number and area served.
- Current ward and department names and functions.
- Plant schematics.

Drawings are typically on paper or in an AutoCAD format, with each gas layered separately and accurate enough to demonstrate the run of pipe work and general location of equipment. A valve chart is an essential element of the drawings, linking the representational drawing with the physical element. The valve chart also details the date of verification for specific valves.

## Validation

QI Infrastructure can validate your drawing against compliance standards, check for inconsistencies and deviations from accepted engineering implementation practices.

The service enables as-built drawings to be easily and quickly maintained and kept up-to-date.

- Quality check and validation of drawings.
- Greater data consistency.
- Minimal dependency on specific personnel with detailed infrastructure knowledge.

## One source of information

QI Infrastructure is particularly useful when planning infrastructure renovations and investments, enabling the compilation of modification history.

- Access of updated drawings.
- Simplifies the process of storing as-built and updated drawings, thereby ensuring accuracy.
- Possibility for asset registration and management.
- Accessibility and transparency of medical gas system knowledge, promoting greater security.

Linde AG

Linde Healthcare, Seitnerstrasse 70, 82049 Pullach, Germany  
Phone +49.89.7446-0, [www.linde-healthcare.com](http://www.linde-healthcare.com)